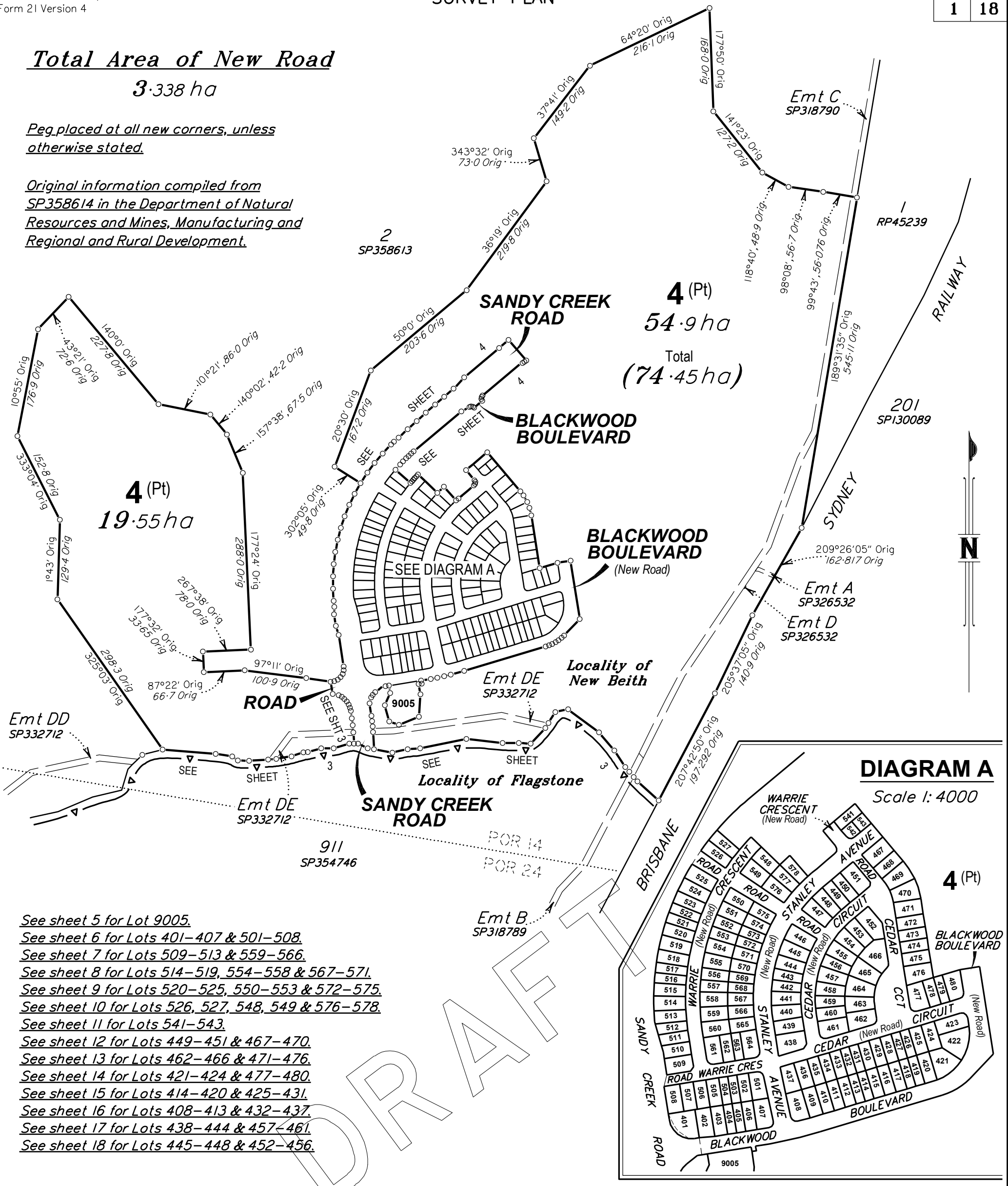


**Total Area of New Road**

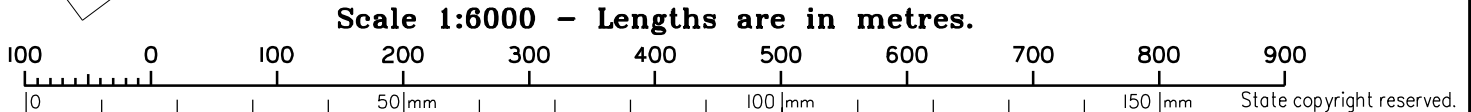
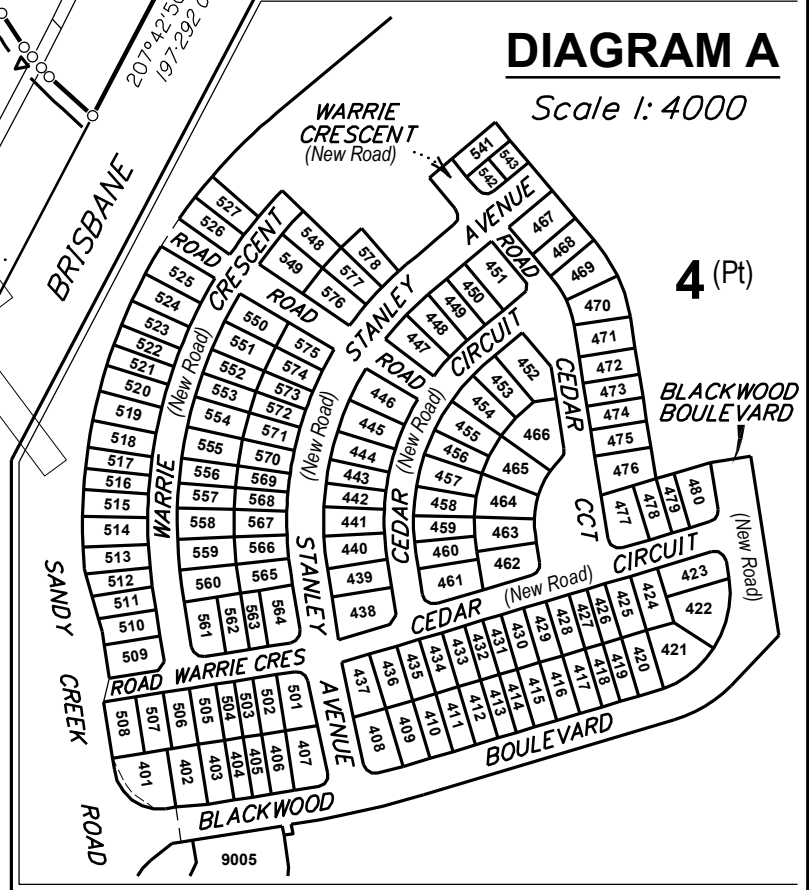
**3.338 ha**

Peg placed at all new corners, unless otherwise stated.

Original information compiled from SP358614 in the Department of Natural Resources and Mines, Manufacturing and Regional and Rural Development.



- See sheet 5 for Lot 9005.
- See sheet 6 for Lots 401-407 & 501-508.
- See sheet 7 for Lots 509-513 & 559-566.
- See sheet 8 for Lots 514-519, 554-558 & 567-571.
- See sheet 9 for Lots 520-525, 550-553 & 572-575.
- See sheet 10 for Lots 526, 527, 548, 549 & 576-578.
- See sheet 11 for Lots 541-543.
- See sheet 12 for Lots 449-451 & 467-470.
- See sheet 13 for Lots 462-466 & 471-476.
- See sheet 14 for Lots 421-424 & 477-480.
- See sheet 15 for Lots 414-420 & 425-431.
- See sheet 16 for Lots 408-413 & 432-437.
- See sheet 17 for Lots 438-444 & 457-461.
- See sheet 18 for Lots 445-448 & 452-456.



RPS AAP CONSULTING PTY LTD (ACN 117 883 173) hereby certify that the land comprised in this plan was surveyed by the corporation, by Guy Allan JAKINS, Cadastral Surveyor, for whose work the corporation accepts responsibility and that the plan is accurate, that the said survey was performed in accordance with the Survey and Mapping Infrastructure Act 2003 and Surveyors Act 2003 and associated Regulations and Standards and that the said survey was completed on

Date .....  
Authorised Delegate

|   |                            |                         |
|---|----------------------------|-------------------------|
| <b>Plan of Lots 4, 401-480, 501-527, 541-543, 548-578 &amp; 9005 and Lease E in Lot 401</b> |                            | Scale: <b>1:6000</b>    |
| <b>Cancelling Lot 3 on SP358614</b>   |                            | Format: <b>STANDARD</b> |
| LOCAL GOVERNMENT: <b>LOGAN CITY</b>   | LOCALITY: <b>NEW BEITH</b> | <b>SP358615</b>         |
| Meridian: <b>MGA Zone 56 vide IS311488</b>  | Survey Records: <b>No</b>  |                         |

**WARNING : Folded or Mutilated Plans will not be accepted.  
Plans may be rolled.  
Information may not be placed in the outer margins.**

(Dealing No.)

4. Lodged by

(Include address, phone number, reference, and Lodger Code)

| I. Existing     |                   | Created   |        |                     |
|-----------------|-------------------|---|--------|---------------------|
| Title Reference | Description       | New Lots  | Road   | Secondary Interests |
|                 | Lot 3 on SP358614 | 4, 401-480, 501-527, 541-543,<br>548-578 & 9005 | New Rd | Lease E             |

ENCUMBRANCE EASEMENT ALLOCATIONS

| Easement                           | Lots to be Encumbered |
|------------------------------------|-----------------------|
| 720626051 (Emt B on SP318789)      | 4                     |
| 720626059 (Emt C on SP318790)      | 4                     |
| 721767682 (Emt DE on SP332712)     | 4                     |
| 722294927 (Emts A & D on SP326532) | 4                     |

ADMINISTRATIVE ADVICE ALLOCATION

| Dealing                | Lots to be Encumbered                        |
|------------------------|--|
| 711464446 (VEG NOTICE) | 4, 401-480, 501-527, 541-543, 548-578 & 9005 |
| 712298369 (VEG NOTICE) | 4, 401-480, 501-527, 541-543, 548-578 & 9005 |
| 713841850 (VEG NOTICE) | 4, 401-480, 501-527, 541-543, 548-578 & 9005 |

DRAFT

|   |        |
|---|--------|
| 4, 401-480, 501-527, 541-543,<br>548-578 & 9005 | POR I4 |
| Lots  | Orig   |

2. Orig Grant Allocation :

3. References :

Dept File :  
Local Govt :  
Surveyor : **151729 PB Stg 4 & 5**

5. Passed & Endorsed :

By: **RPS AAP CONSULTING PTY LTD**  
Date :  
Signed :  
Designation : **Cadastral Surveyor**

6. **Building Format Plans only.**

I certify that :  
\* As far as it is practical to determine, no part of the building shown on this plan encroaches onto adjoining lots or road;  
~~\* Part of the building shown on this plan encroaches onto adjoining \* lots and road.~~

..... Cadastral Surveyor/Director \* Date  
\*delete words not required

7. Lodgement Fees :

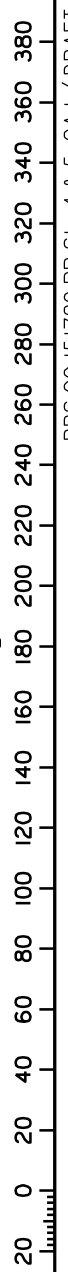
|                  |          |
|------------------|----------|
| Survey Deposit   | \$ ..... |
| Lodgement        | \$ ..... |
| ..... New Titles | \$ ..... |
| Photocopy        | \$ ..... |
| Postage          | \$ ..... |
| TOTAL            | \$ ..... |

8. Insert Plan Number

**SP358615**

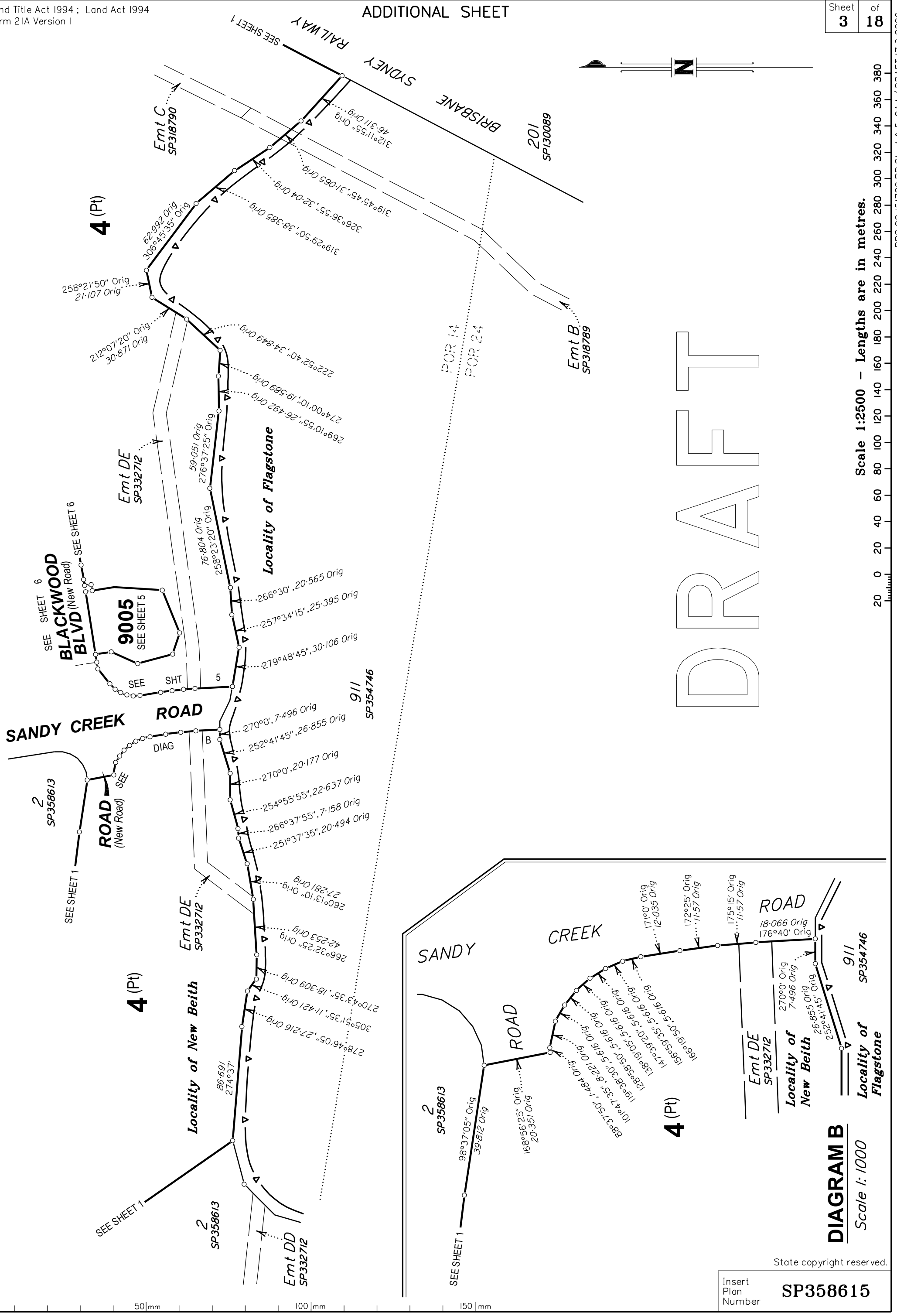


Scale 1:2500 - Lengths are in metres.



RPS GC 151729 PB Stg 4 & 5 GAJ / DRAFT 17.3.2026

**DRAFT**



**DIAGRAM B**  
Scale 1:1000

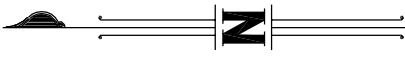
Insert Plan Number  
**SP358615**

State copyright reserved.







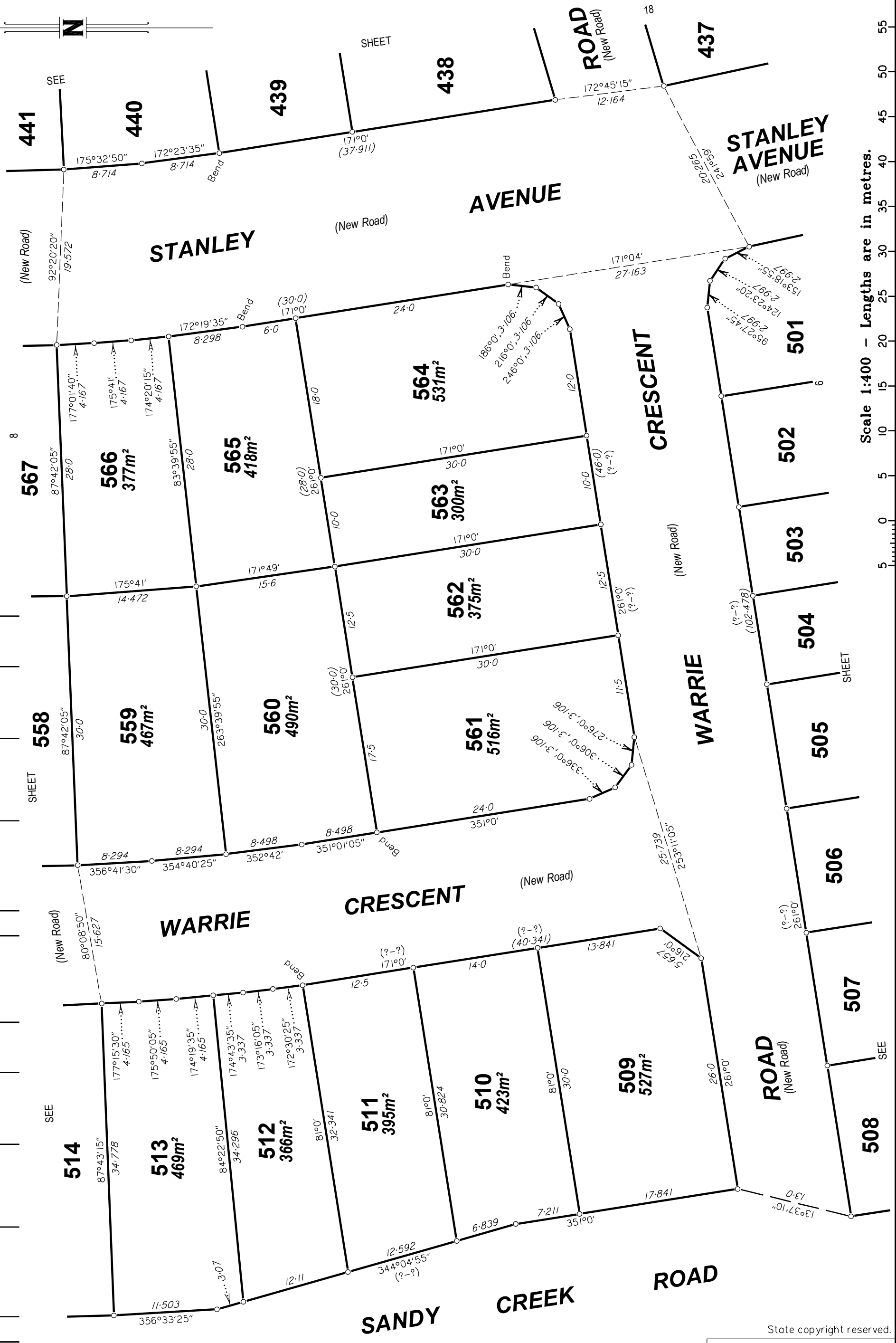


REFERENCE MARKS cont'd

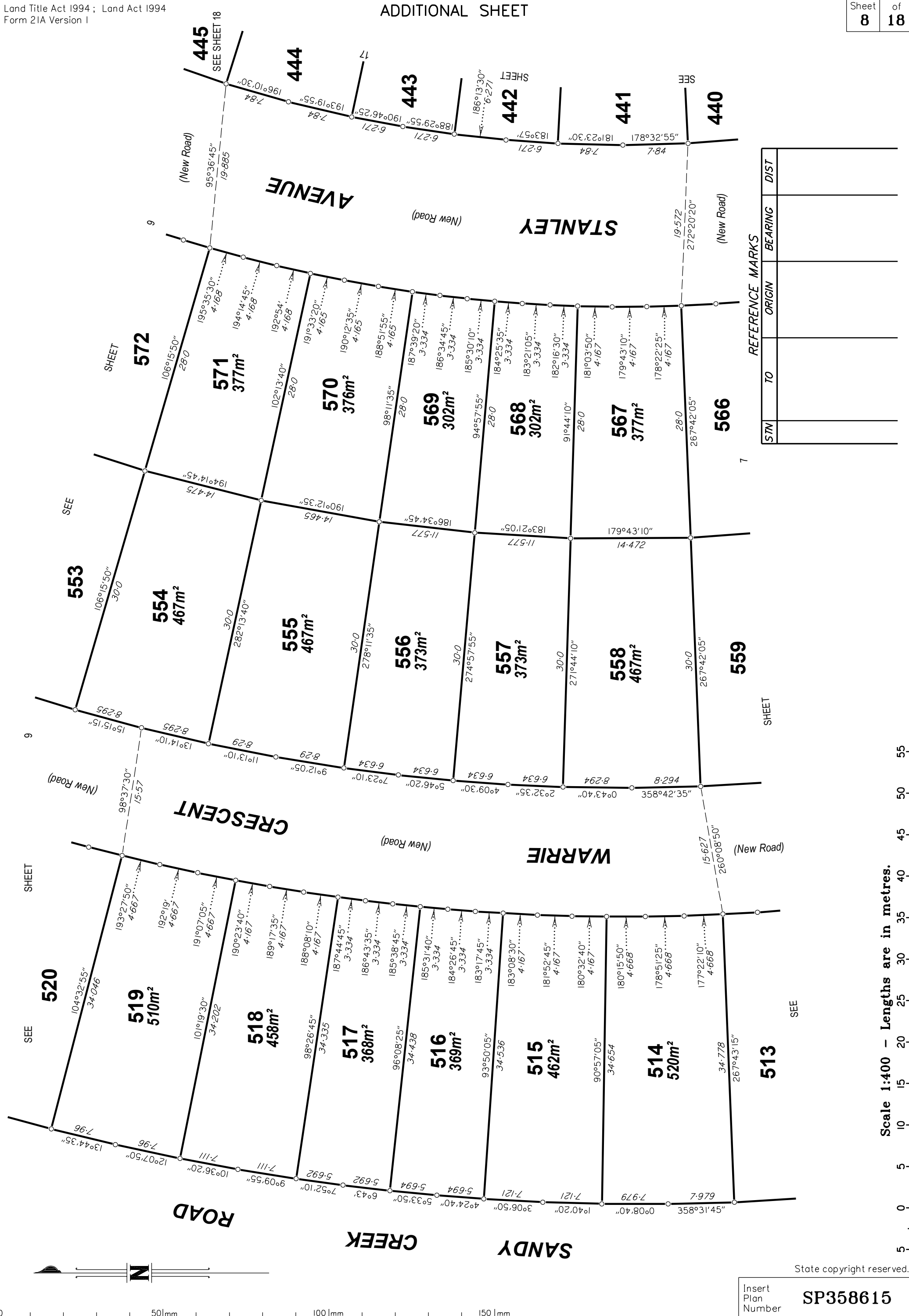
| STN | TO | ORIGIN | BEARING | DIST |
|-----|----|--------|---------|------|
|     |    |        |         |      |
|     |    |        |         |      |

REFERENCE MARKS

| STN | TO | ORIGIN | BEARING | DIST |
|-----|----|--------|---------|------|
|     |    |        |         |      |
|     |    |        |         |      |



Scale 1:400 - Lengths are in metres.



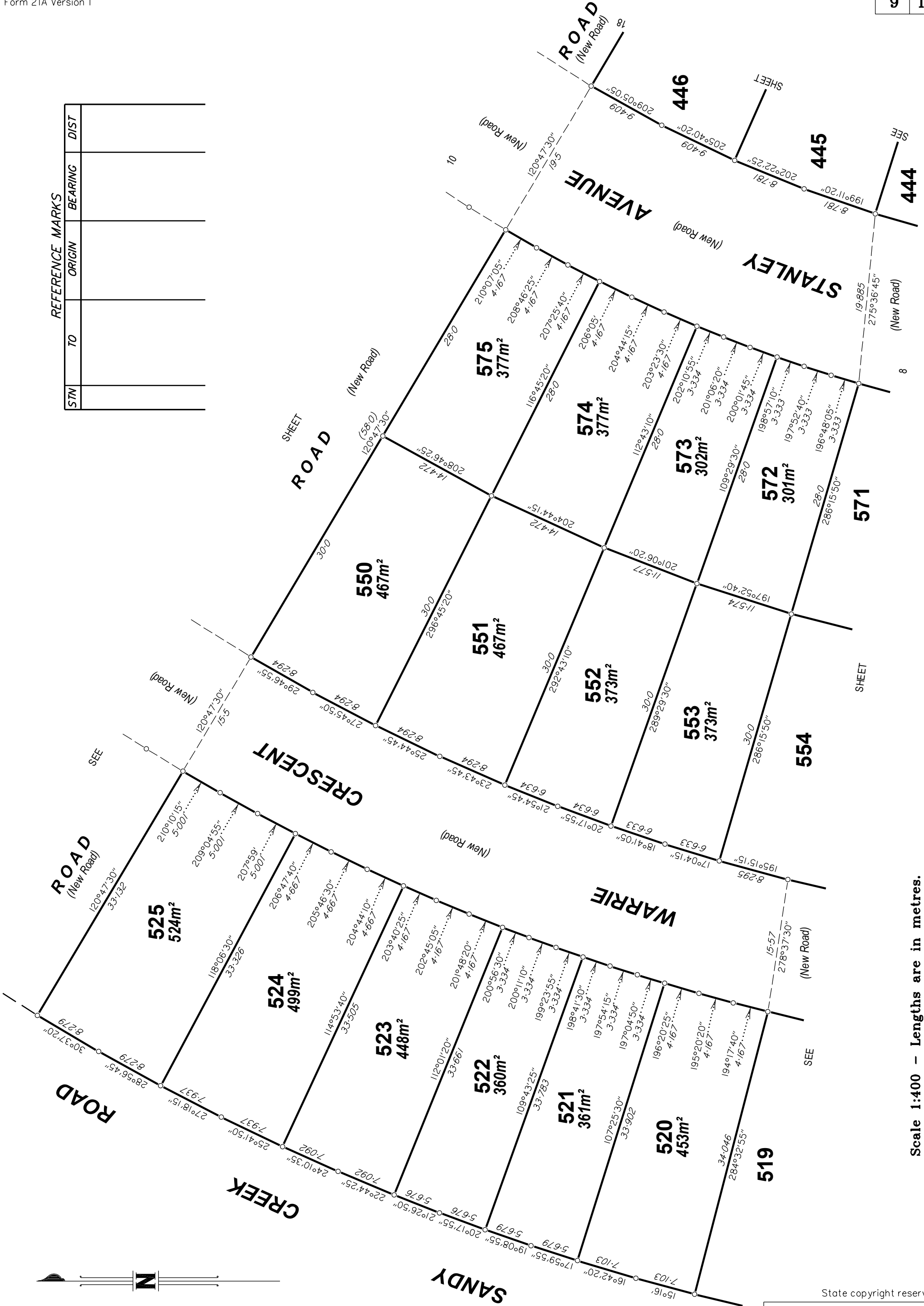
| REFERENCE MARKS |    |        |         |      |
|-----------------|----|--------|---------|------|
| STN             | TO | ORIGIN | BEARING | DIST |
|                 |    |        |         |      |
|                 |    |        |         |      |
|                 |    |        |         |      |

Scale 1:400 - Lengths are in metres.

State copyright reserved.

Insert Plan Number **SP358615**

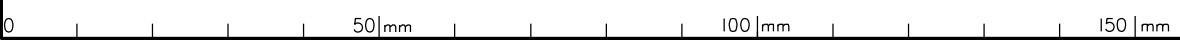
| STN | TO | ORIGIN | BEARING | DIST |
|-----|----|--------|---------|------|
|     |    |        |         |      |
|     |    |        |         |      |
|     |    |        |         |      |

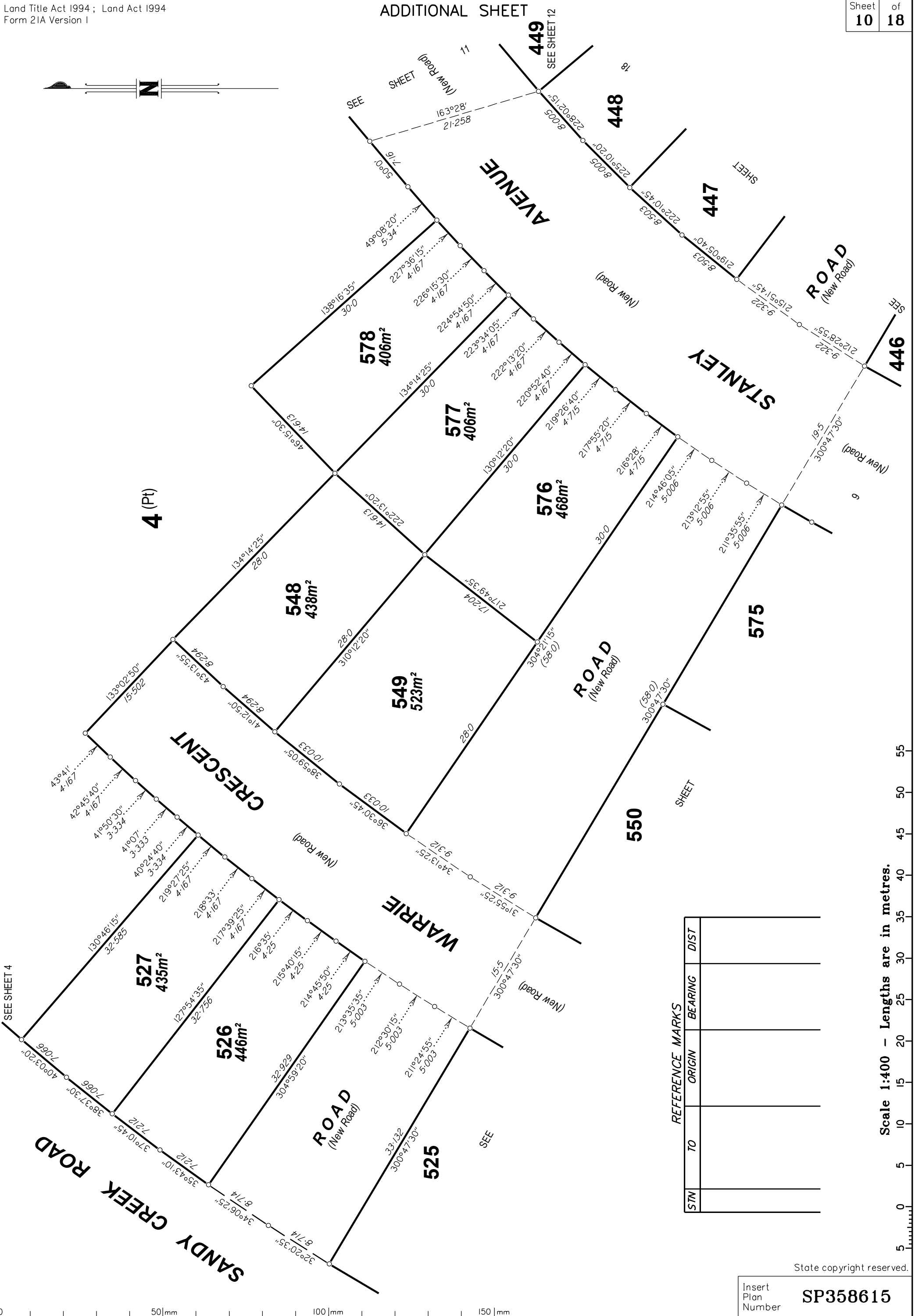


Scale 1:400 - Lengths are in metres.

State copyright reserved.

Insert Plan Number **SP358615**





| STM | TO | ORIGIN | BEARING | DIST |
|-----|----|--------|---------|------|
|     |    |        |         |      |
|     |    |        |         |      |
|     |    |        |         |      |

Scale 1:400 - Lengths are in metres.

State copyright reserved.

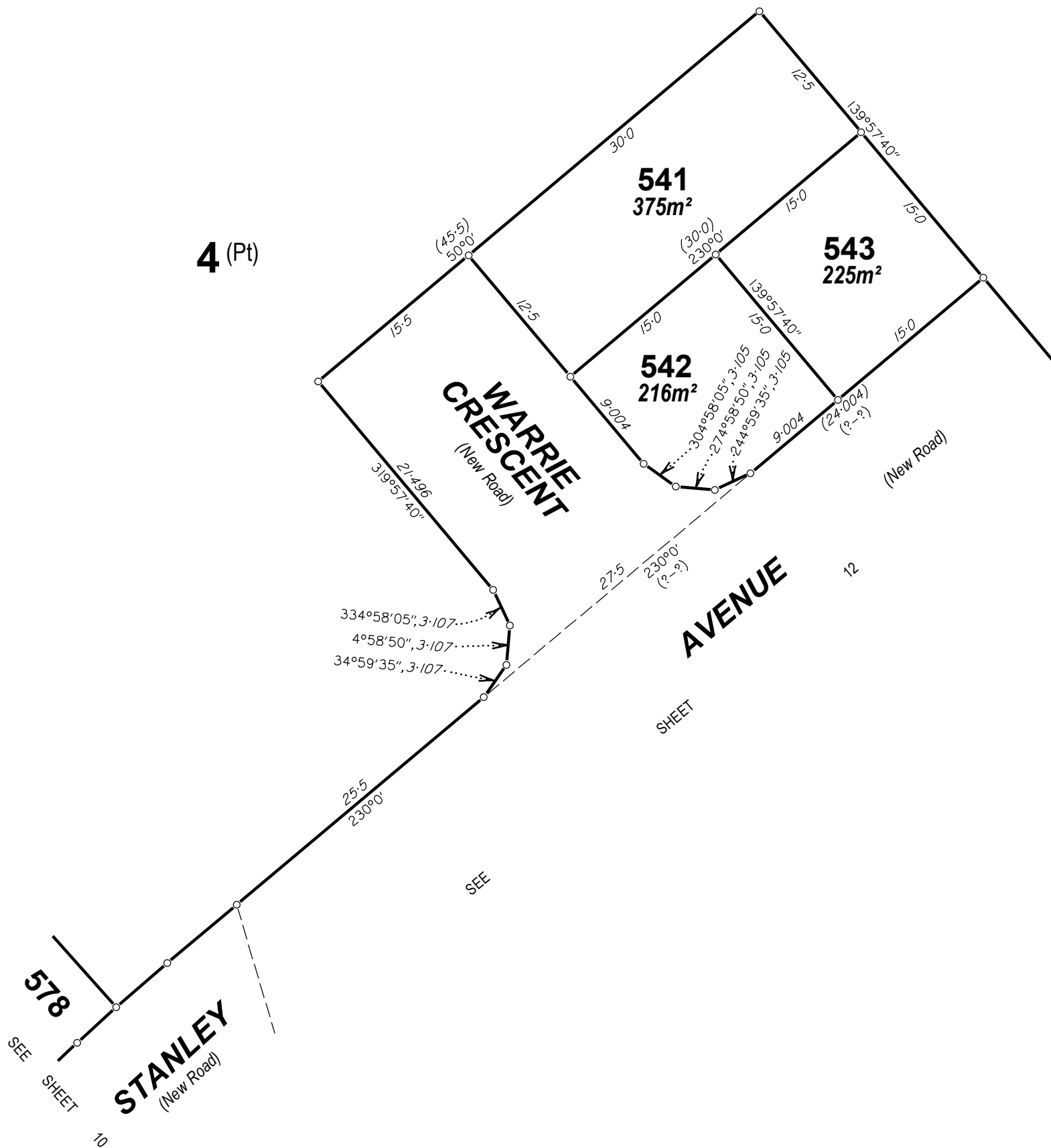
Insert Plan Number **SP358615**

REFERENCE MARKS

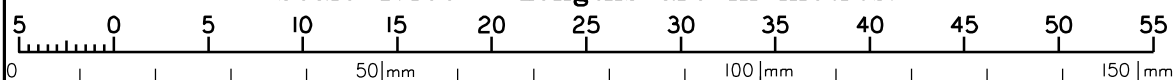
| STN | TO | ORIGIN | BEARING | DIST |
|-----|----|--------|---------|------|
|     |    |        |         |      |
|     |    |        |         |      |
|     |    |        |         |      |
|     |    |        |         |      |



4 (Pt)



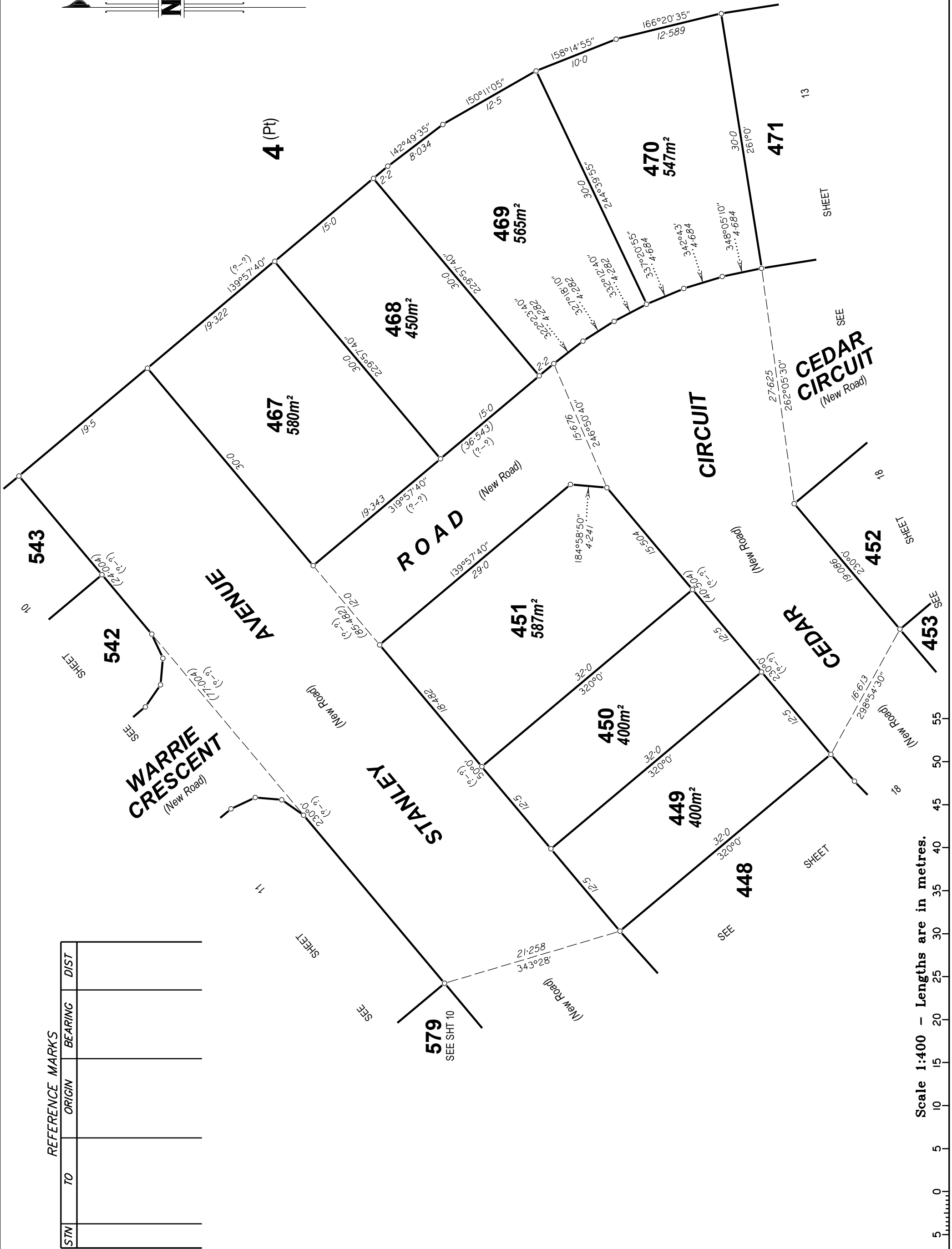
Scale 1:400 - Lengths are in metres.



State copyright reserved.

Insert Plan Number

SP358615



| STN | TO | ORIGIN | BEARING | DIST |
|-----|----|--------|---------|------|
|     |    |        |         |      |
|     |    |        |         |      |
|     |    |        |         |      |
|     |    |        |         |      |

50|mm      100|mm      150|mm

Scale 1:400 - Lengths are in metres.

State copyright reserved.

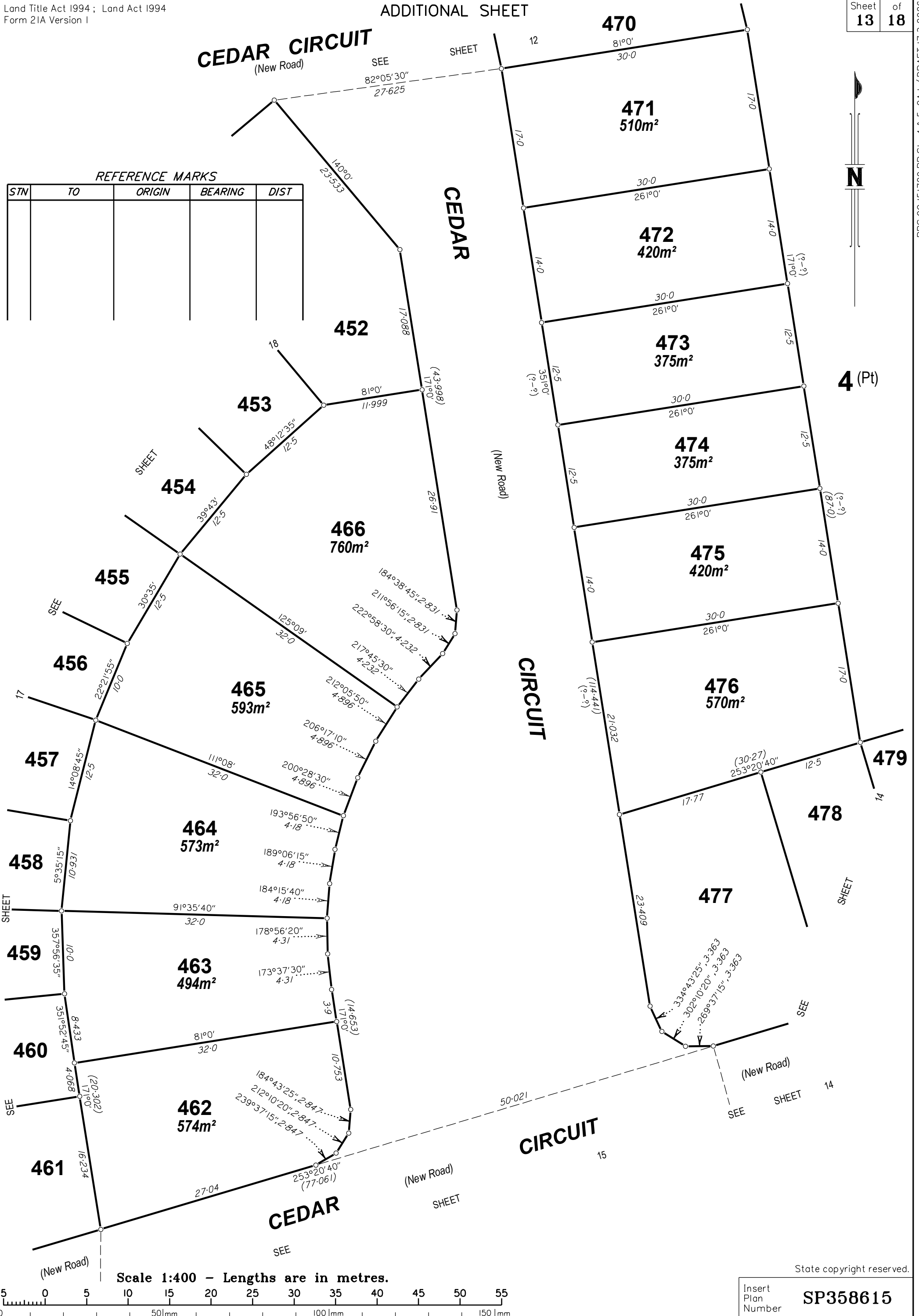
Insert Plan Number

**SP358615**

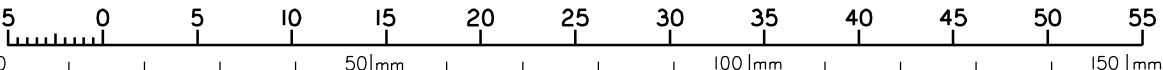
**CEDAR CIRCUIT**  
(New Road)

REFERENCE MARKS

| STN | TO | ORIGIN | BEARING | DIST |
|-----|----|--------|---------|------|
|     |    |        |         |      |
|     |    |        |         |      |
|     |    |        |         |      |
|     |    |        |         |      |



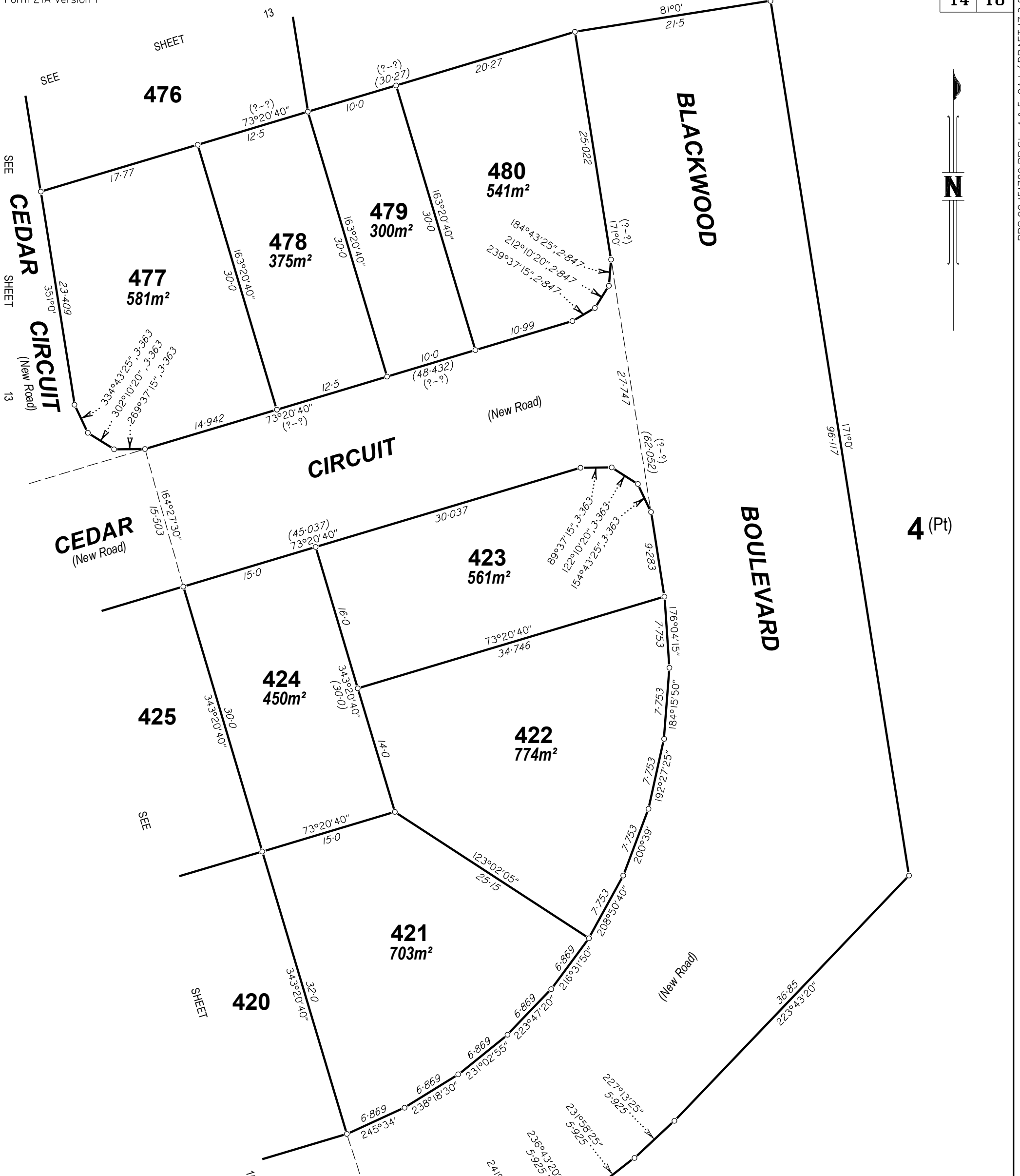
Scale 1:400 - Lengths are in metres.



State copyright reserved.

Insert  
Plan  
Number

**SP358615**

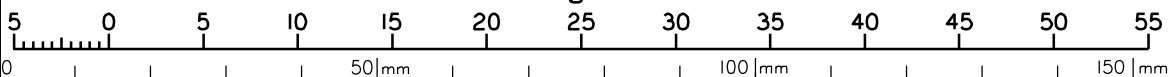


4 (Pt)

REFERENCE MARKS

| STN | TO | ORIGIN | BEARING | DIST |
|-----|----|--------|---------|------|
|     |    |        |         |      |
|     |    |        |         |      |
|     |    |        |         |      |
|     |    |        |         |      |
|     |    |        |         |      |

Scale 1:400 - Lengths are in metres.



State copyright reserved.

Insert Plan Number

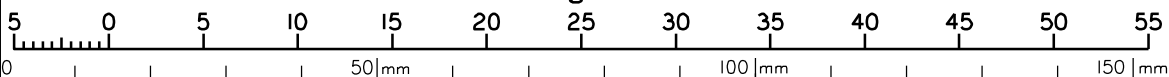
SP358615

REFERENCE MARKS

| STN | TO | ORIGIN | BEARING | DIST |
|-----|----|--------|---------|------|
|     |    |        |         |      |
|     |    |        |         |      |
|     |    |        |         |      |
|     |    |        |         |      |



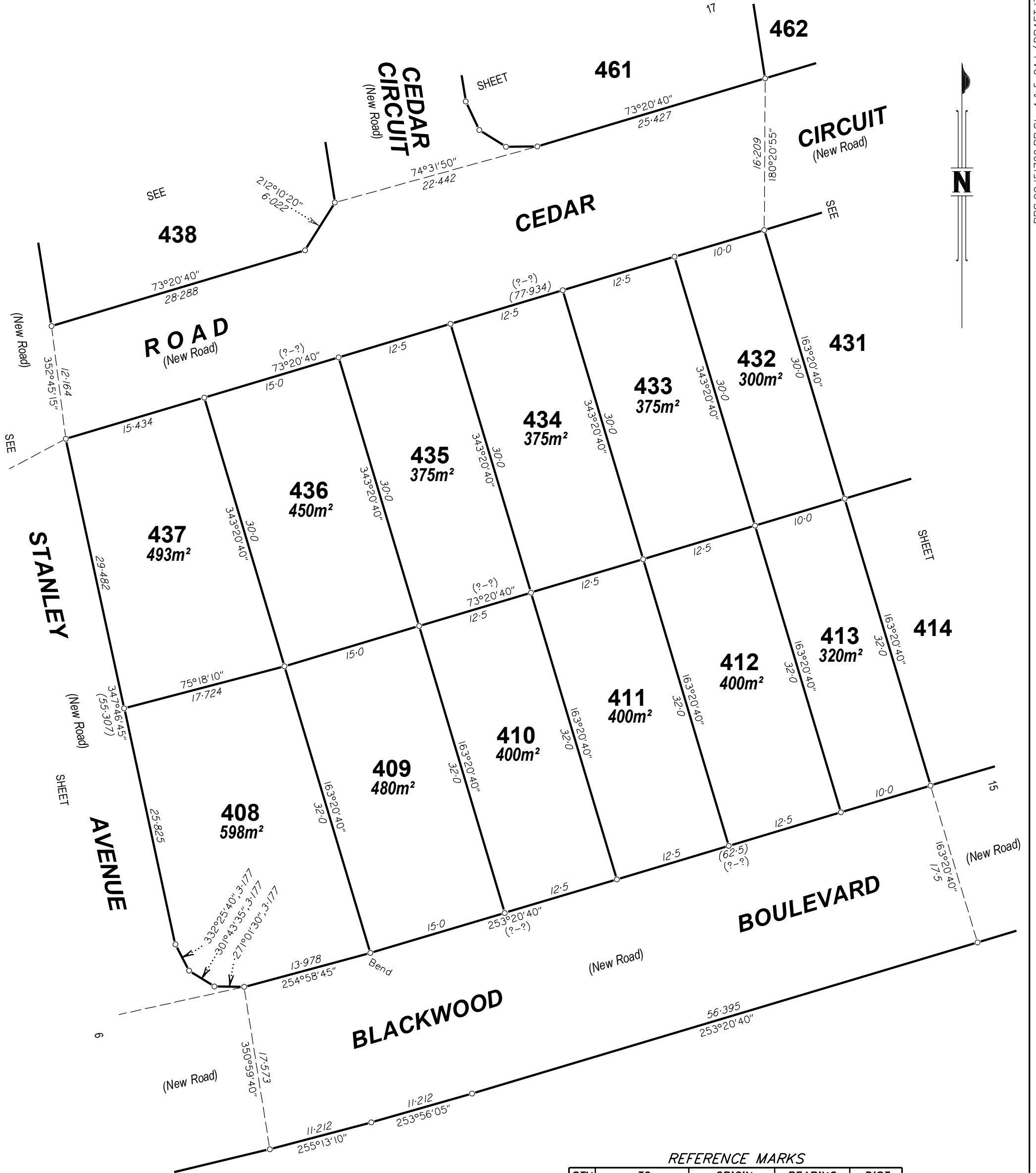
Scale 1:400 - Lengths are in metres.



State copyright reserved.

Insert Plan Number

SP358615

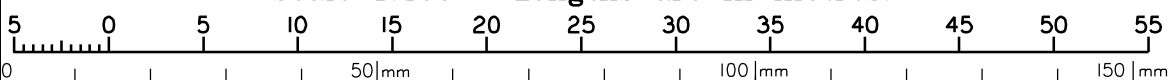


4 (Pt)

REFERENCE MARKS

| STN | TO | ORIGIN | BEARING | DIST |
|-----|----|--------|---------|------|
|     |    |        |         |      |
|     |    |        |         |      |
|     |    |        |         |      |
|     |    |        |         |      |

Scale 1:400 - Lengths are in metres.



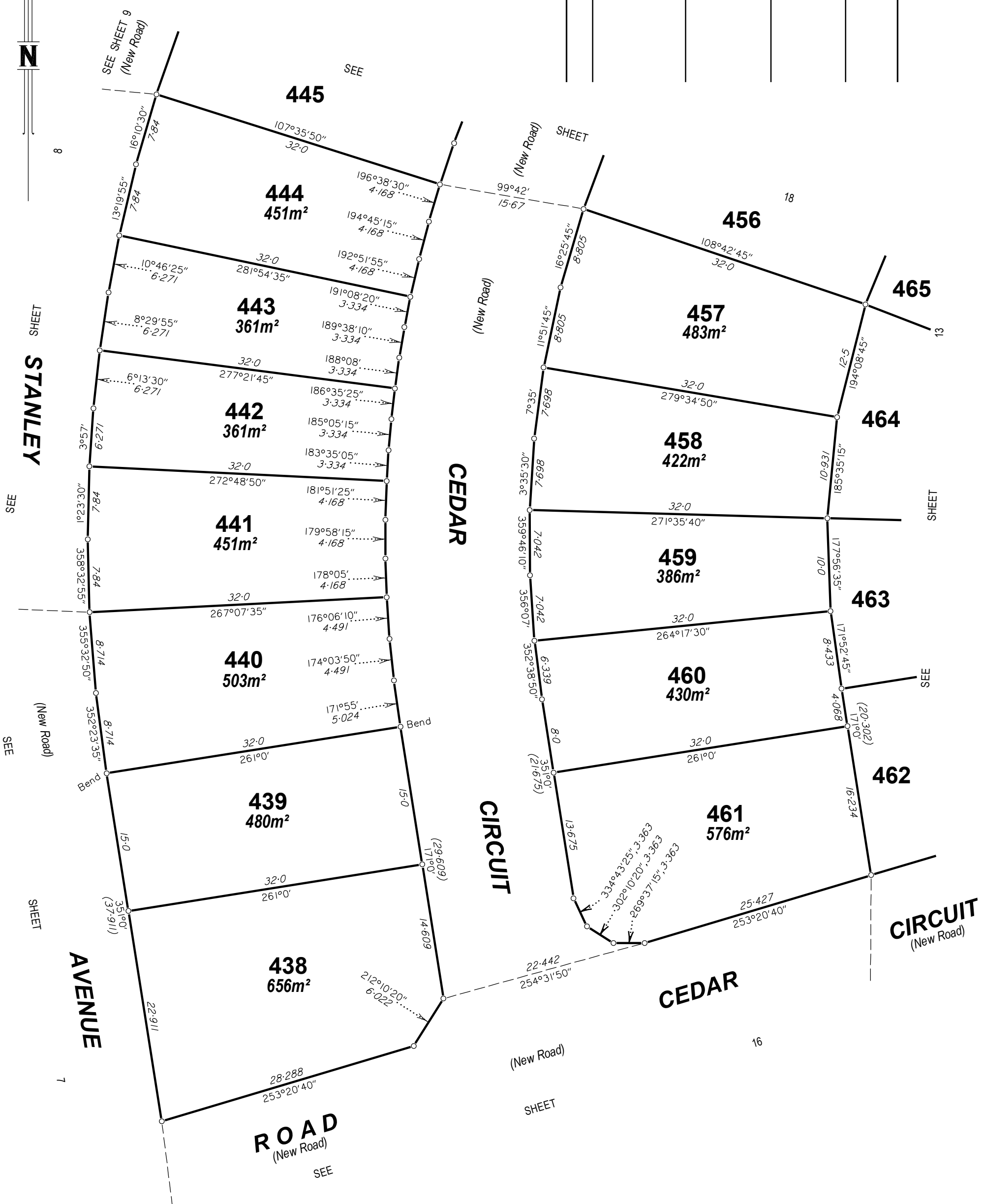
State copyright reserved.

Insert Plan Number

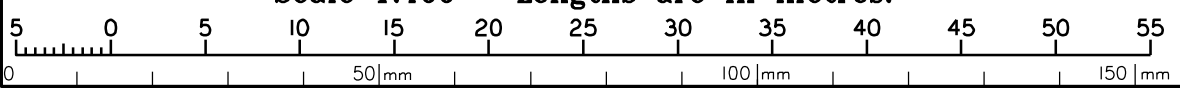
SP358615

REFERENCE MARKS

| STN | TO | ORIGIN | BEARING | DIST |
|-----|----|--------|---------|------|
|     |    |        |         |      |
|     |    |        |         |      |
|     |    |        |         |      |
|     |    |        |         |      |



Scale 1:400 - Lengths are in metres.



State copyright reserved.

Insert Plan Number **SP358615**

13

SHEET

**CIRCUIT**

(New Road)

171°0'  
17-088

SEE  
**CEDAR**

140°0'  
23-533

**452**  
632m<sup>2</sup>

**466**

**453**  
452m<sup>2</sup>

**454**  
483m<sup>2</sup>

**455**  
483m<sup>2</sup>

**456**  
386m<sup>2</sup>

**457**

12

SHEET

**449**

**448**  
456m<sup>2</sup>

**447**  
486m<sup>2</sup>

**446**  
541m<sup>2</sup>

**CEDAR**

**445**  
505m<sup>2</sup>

**444**

**AVENUE**

10

**ROAD**  
(New Road)

(New Road)

(New Road)

**STANLEY**

SHEET

SEE

SEE SHEET 8  
(New Road)

SEE

17

55

50

45

40

35

30

25

20

15

10

5

0

5

10

15

20

25

30

35

40

45

50

Scale 1:400 - Lengths are in metres.

State copyright reserved.

Insert  
Plan  
Number

**SP358615**

| REFERENCE MARKS |    |        |         |      |
|-----------------|----|--------|---------|------|
| STN             | TO | ORIGIN | BEARING | DIST |
|                 |    |        |         |      |
|                 |    |        |         |      |
|                 |    |        |         |      |
|                 |    |        |         |      |



50|mm

100|mm

150|mm